



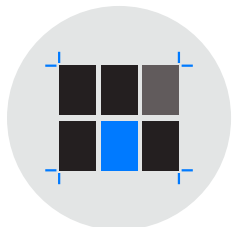
Rethink planning and imposition

Sophisticated planning and imposition for packaging, labels, commercial, and wide format.



Blazing Planning

Search across **millions** of combinations **in minutes** to find the most **cost effective** layouts



Precise Imposition

Create **print-ready** layouts with ease using **fine grained** item control and a rich set of **dynamic marks**.



Lights Out Automation

Use **Enfocus Switch**, **Hot Folders**, or a custom **REST-based** client to fully automate Phoenix.

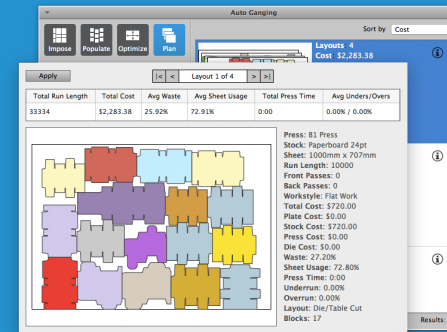
Phoenix is built from the ground up to **cut cost**. This is accomplished by generating **fast** accurate estimates, **reducing** pre-press time, **automating** error-prone tasks, and **maximizing** media & device usage.



Blazing Planning

Search across **millions** of combinations in **minutes** to find the most **cost effective** layouts

Strap on your rocket packs and get ready! At the heart of Phoenix is a blazing fast ganging engine designed to minimize both press costs and post-press complexity. Hours or even days of work can be reduced to mere minutes, and wait... here's the best part, layouts are print-ready!



Choosing the Right Result

So how do you wade through the thousands of results Phoenix presents you with? Simply use the advanced ganging interface and tools to:

- ✓ Sort results
- ✓ Show detailed breakdown of costs
- ✓ Review waste, press time, overruns, etc.
- ✓ Large layout previews

A **key advantage** of Phoenix is it is designed to work well with both **square-cut** and **irregular shape** designs, enabling users to use the same tools across a **variety of different** work types.

I have been creating press combos for twenty years and Phoenix is unlike any other software I have ever used. Its simple interface, speed and revision capabilities are excellent.

Dave Tascarella
 Vice President of Operations
 DWS Printing

Plan and Impose All Your Work

Phoenix is designed to be efficient with all different types of printed products.

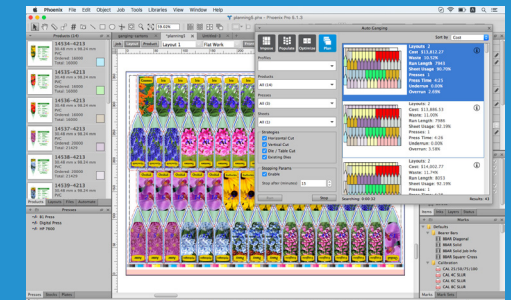
- ✓ Packaging & Labels
- ✓ Commercial
- ✓ Wide Format
- ✓ Tags
- ✓ Cards



Devices: One Size Fits All

Phoenix is designed to work with offset, digital, and wide format.

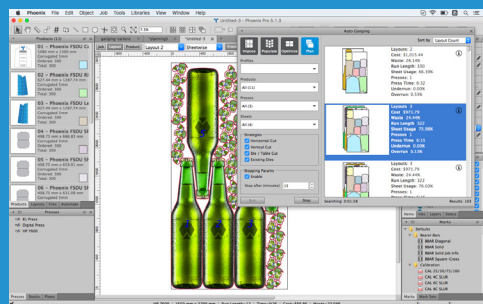
- ✓ Offset
- ✓ Digital
- ✓ Wide Format
- ✓ Plan for multiple presses at once



Intent Based Planning

Phoenix is designed to model your shop and all the systems in it.

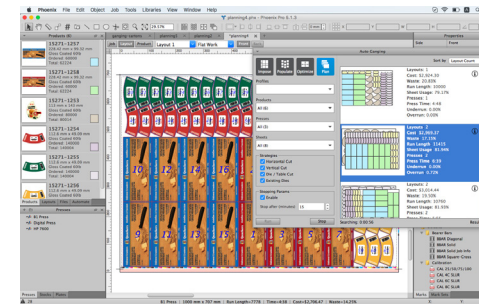
- ✓ Order details: quantity, inks, bleed, etc.
- ✓ Presses: Costs, capabilities, marks
- ✓ Substrate: Type, grade, cost
- ✓ Postpress considerations & costs
- ✓ Plate costs

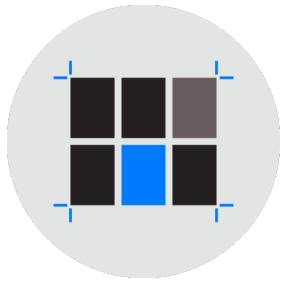


Existing Dies

Phoenix can use existing dies or “Standing Dies” to generate ganged layouts that are guaranteed to match the postpress processes you already have set-up.

- ✓ Fast search over thousands of dies
- ✓ Find the most cost effective layouts
- ✓ Compare costs of using existing dies vs creating new dies
- ✓ Automatic shape detection

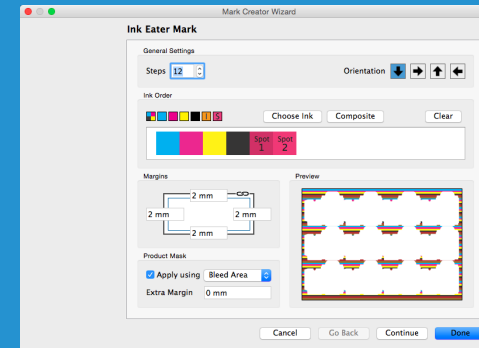




Precise Imposition

Create **print-ready** layouts with ease using **fine grained** item control and a rich set of **dynamic marks**.

With planning software, imposition is often an afterthought. Phoenix is different. In fact, Phoenix started out as an imposition solution and has one of the most comprehensive set of imposition tools on the market with every tool you need to get layouts ready for print quickly.



Sheet and Plate Marks

Phoenix has a rich set of dynamic sheet and plate marks designed to go in the right place with the right inks and text every time.

- ✓ Dynamic PDF marks
- ✓ 16 different barcode types
- ✓ Camera marks and eyelet marks
- ✓ Textmarks with 200+ dynamic keywords
- ✓ Ink eaters
- ✓ Crop marks, bearer bars, and more!

We've taken a **fresh approach** to each imposition task facing printers, developing **smarter tools** that do the **heavy lifting** while still letting you drill into each item for **precise control**.

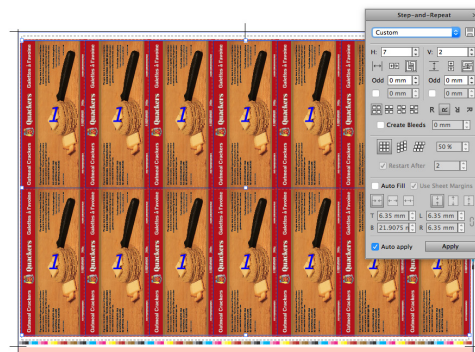
Within the first week of our trial we were sold. We were able to create print-ready layouts in Phoenix over three times faster than our existing solution. Since the switch to Phoenix we have been able to simplify our workflow and reduce errors significantly during both pre-press and post-press.

Ricardo Reis, Pre-Press Operator, Cartonagem Cardoso

Creating Layouts

Whether you do seamless repeats, square-cut or nested layouts directly from artwork, or work with existing CAD layouts, Phoenix has the right tool for you to create print-ready layouts in no time.

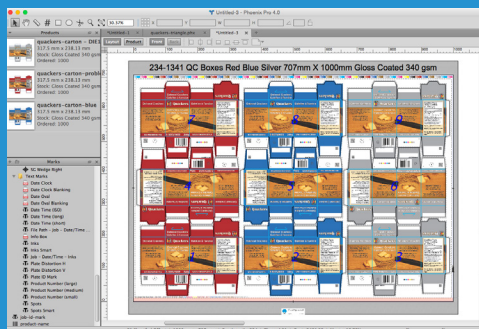
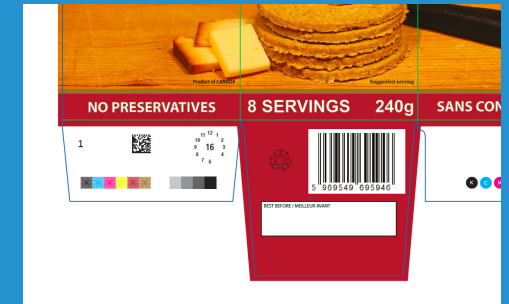
- ✓ Template based layouts
- ✓ CAD die import
- ✓ Grid-based repeats
- ✓ Seamless repeats



Item and Group Marks

Phoenix marks are equally powerful at the group and item level. Smart marks are applied once and propagated throughout the layout, updating automatically when content changes.

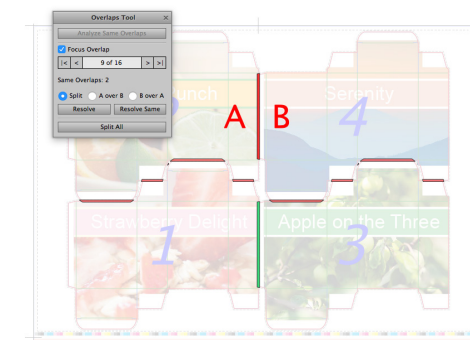
- ✓ Registration marks
- ✓ Dynamic barcodes
- ✓ Station number marks
- ✓ Color patch marks and more



Fine Tuning Layouts

Phoenix gives you pinpoint control over all aspects of the layout.

- ✓ Alignment tool with key object alignment, distribute, and more
- ✓ Group/ungroup, show/hide items
- ✓ Change item stacking order
- ✓ Hot keys for item swapping
- ✓ Arbitrary rotation



Artwork Bleed Masking

Phoenix has a number of tools for creating bleed masks and quickly resolving bleed overlaps.

- ✓ Rectangular or contour-based bleed masks
- ✓ Resolve overlaps instantly
- ✓ Bisect any overlap region to resolve portions differently



Lights Out Automation

Use **Enfocus Switch**, **Hot Folders**, or a custom **REST-based** client to fully automate Phoenix.

Phoenix provides the ultimate flexibility when it comes to automation. In a world with hundreds of different systems out there, one size doesn't fit all. Our philosophy is make things open, so whether it be plug and play with Enfocus Switch, custom scripted hot folders, or full-on web based REST-client, the sky's the limit.

Automate **repetitive** tasks.
Reduce errors.
Work less, **do more!**

Task	Time	Status	Details
2018-05-24 000-001	2018-05-24 13:29	000-001	File 12345-123.csv moved to Processed folder
2018-05-24 000-002	2018-05-24 13:29	000-001	Processing 1 File(s)
2018-05-24 000-003	2018-05-24 13:29	000-001	Running action Create job
2018-05-24 000-004	2018-05-24 13:29	000-001	Create job action completed successfully, job ID: 12341-323
2018-05-24 000-005	2018-05-24 13:29	000-001	Running action Import Product CSV
2018-05-24 000-006	2018-05-24 13:29	000-001	Import Product CSV action completed successfully /Users/sagendjonge/Desktop
2018-05-24 000-007	2018-05-24 13:29	000-001	Running action Plan
2018-05-24 000-008	2018-05-24 13:30	000-001	Plan action completed successfully /Users/sagendjonge/Desktop
2018-05-24 000-009	2018-05-24 13:30	000-001	Export PDF action completed successfully /Users/sagendjonge/Desktop
	2018-05-24 13:30	000-001	Processed 1 File(s)
	2018-05-24 13:32	000-002	File 12341-123.csv moved to Processed folder
	2018-05-24 13:32	000-002	Processing 1 File(s)
	2018-05-24 13:32	000-002	Running action Create job
	2018-05-24 13:32	000-002	Create job action completed successfully, job ID: 12341-326
	2018-05-24 13:32	000-002	Running action Import Product CSV
	2018-05-24 13:32	000-002	Import Product CSV action completed successfully /Users/sagendjonge/Desktop
	2018-05-24 13:32	000-002	Running action Plan
	2018-05-24 13:32	000-002	Plan action completed successfully /Users/sagendjonge/Desktop
	2018-05-24 13:33	000-002	Running action Export PDF
	2018-05-24 13:33	000-002	Export PDF action completed successfully /Users/sagendjonge/Desktop
	2018-05-24 13:33	000-002	Processed 1 File(s)
	2018-05-24 13:33	000-002	File 12341-123.csv moved to Processed folder
	2018-05-24 13:33	000-003	Processing 1 File(s)
	2018-05-24 13:33	000-003	Running action Create job
	2018-05-24 13:33	000-003	Create job action completed successfully, job ID: 12341-328
	2018-05-24 13:33	000-003	Running action Import Product CSV
	2018-05-24 13:33	000-003	Import Product CSV action completed successfully /Users/sagendjonge/Desktop
	2018-05-24 13:33	000-003	Running action Plan
	2018-05-24 13:33	000-003	Plan action completed successfully /Users/sagendjonge/Desktop
	2018-05-24 13:34	000-003	Running action Export PDF
	2018-05-24 13:34	000-003	Export PDF action completed successfully /Users/sagendjonge/Desktop
	2018-05-24 13:34	000-004	File 12341-127.csv moved to Processed folder
	2018-05-24 13:34	000-004	Processing 1 File(s)
	2018-05-24 13:34	000-004	Running action Create job
	2018-05-24 13:34	000-004	Create job action completed successfully, job ID: 12341-337
	2018-05-24 13:34	000-004	Running action Import Product CSV
	2018-05-24 13:34	000-004	Import Product CSV action completed successfully /Users/sagendjonge/Desktop
	2018-05-24 13:34	000-004	Running action Plan
	2018-05-24 13:35	000-004	Plan action completed successfully
	2018-05-24 13:35	000-004	Running action Export PDF

Hot Folders

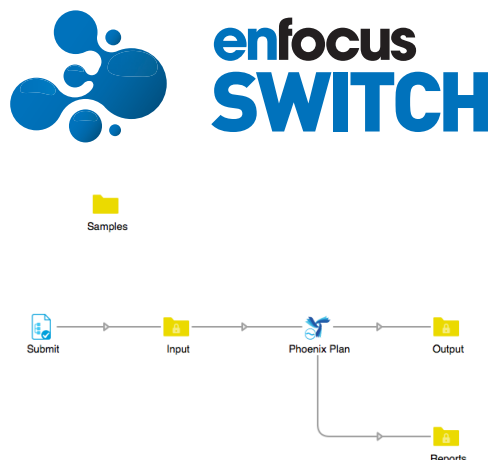
Create hot folders and define a chain of actions to perform. Once started, the hot folders will pick up Phoenix resource XML files or other third-party formats and drive the job to completion headlessly.

- ✓ Over 25 actions available. Automate all major planning and imposition workflows in Phoenix.
- ✓ All export actions supported: PDF/JDF, die layouts, reporting, vector separations, and more
- ✓ Simple XML format for describing resource files and properties
- ✓ Powerful scripting capabilities available through the JavaScript scripting interface
- ✓ Real-time logging via Hot Folder View in Phoenix

Enfocus Switch

Enfocus Switch integration provides completely headless automation with the Phoenix Plan configurator.

- ✓ Harnesses the full power of Phoenix Plan inside Switch
- ✓ Import product orders from CSV or in direct PDF input
- ✓ All product properties are available for total control over how products are defined in Phoenix
- ✓ Impose PDF & JDF output using Phoenix presets
- ✓ Generate die layouts, and detailed PDF or XML reports
- ✓ Detailed XML datasets are attached to all output files



REST Web Service

Phoenix REST-based Web Service is a first of its kind for imposition and planning software, and represents the most comprehensive option for automating Phoenix. The web service provides a superset of all methods available in Hot Folders and Enfocus Switch and opens up most of the functionality found in Phoenix.

- ✓ Complete automation of most features in Phoenix including all ganging tools and export actions
- ✓ Standards-based REST interface. Connect to service from virtually any programming language and platform.
- ✓ Full support for both JSON and XML inputs and outputs.
- ✓ Live Documentation feature for viewing all API methods and calling into the service interactively from a user friendly web page
- ✓ Ability to fully manage libraries including presses, sheets, and plates

jobs : Job Automation	
POST	/jobs
GET	/jobs
GET	/jobs/{jobid}
DELETE	/jobs/{jobid}
POST	/jobs/{jobid}/export/die/cff2
POST	/jobs/{jobid}/export/die/pdf
POST	/jobs/{jobid}/export/jdf
POST	/jobs/{jobid}/export/jdf-cutting
POST	/jobs/{jobid}/export/pdf
POST	/jobs/{jobid}/export/pdf-vector
POST	/jobs/{jobid}/export/report/json

Response Class	
Model	Model Schema
<pre> { "success": false, "resources": [""], "warnings": [{ "id": 0, "text": "", "action": "" }] } </pre>	

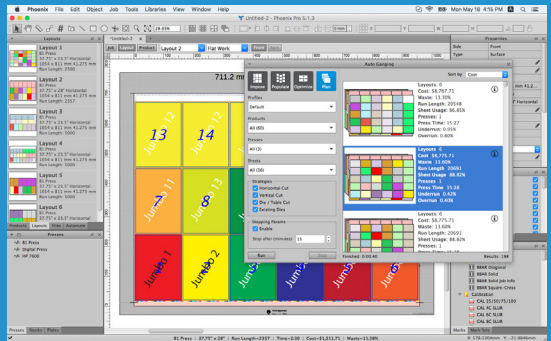
Name	Ordered	Bleed	Stock	Spacing	Cut Layer	Crease Layer	Artwork File
GLW993423	16000	2mm	PVC		Cut		PVC/16000/14534-4213.pdf
GLW993424	16000	2mm	PVC		Cut		PVC/16000/14535-4213.pdf
GLW993425	16000	2mm	PVC		Cut		PVC/16000/14536-4213.pdf
GLW993426	20000	2mm	PVC		Cut		PVC/20000/14537-4213.pdf
GLW993427	20000	2mm	PVC		Cut		PVC/20000/14538-4213.pdf
GLW993428	20000	2mm	PVC		Cut		PVC/20000/14539-4213.pdf
GLW993429	40000	2mm	PVC		Cut		PVC/40000/14540-4213.pdf
GLW993430	40000	2mm	PVC		Cut		PVC/40000/14541-4213.pdf
GLW993431	40000	2mm	PVC		Cut		PVC/40000/14542-4213.pdf
GLW993432	50000	2mm	PVC		Cut		PVC/50000/14543-4213.pdf
GLW993433	50000	2mm	PVC		Cut		PVC/50000/14544-4213.pdf
GLW993434	50000	2mm	PVC		Cut		PVC/50000/14545-4213.pdf
GLW993435	50000	2mm	PVC		Cut		PVC/50000/14546-4213.pdf
GLW993436	50000	2mm	PVC		Cut		PVC/50000/14547-4213.pdf
GLW993437	50000	2mm	PVC		Cut		PVC/50000/14548-4213.pdf

Imposition and Planning United

Imposition and planning united means your prepress and planning departments no longer have to waste valuable time repeating the same work. Plan your layouts and use the same job in prepress to produce your print ready output.

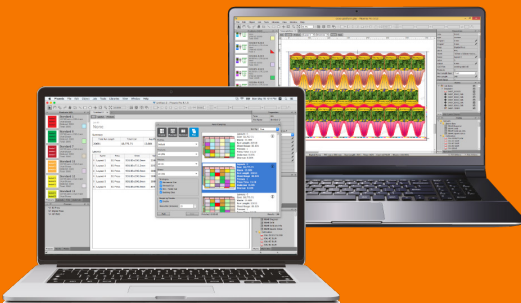
Modern Interface

Key to any software intended to reduce clicks, is a simple intuitive design. Phoenix has this in spades employing modern design patterns and easy-on-the-eyes color theme.



Cross Platform

Phoenix is built for speed on Mac and Windows. Supported file formats are the same for both systems and 100% compatible.



See for yourself the power and flexibility of Phoenix
Visit <http://tilialabs.com> and request a demo